



Provides direct light from an emitting part equipped with LEDs in straight lines



Applications

Various inspections for reading text, visual inspection for damage on long and thin workpieces, damage inspection for metal with hairline finishing, light source for a line sensor camera, various inspections to detect foreign material, etc.

Rich Lineup with 141 Models\*

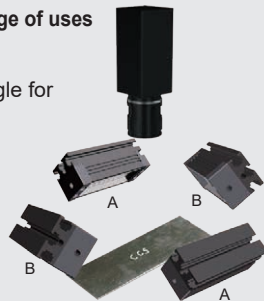
We have a lineup of 141 models\*, such as combinations of the size and emitting width of the emitting surface, directional characteristics, and the emitted color.

\* Total number of models of the conventional products and high-power type products.

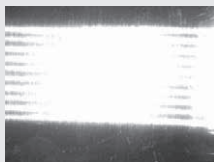
Compatible with a wide range of uses

You can freely adjust the illuminating direction and angle for use in a wide range of uses.

Bar lights allow the illumination direction and angle to be freely adjusted, enabling imaging according to the workpiece.



Illuminating image from direction A



Illuminating image from direction B



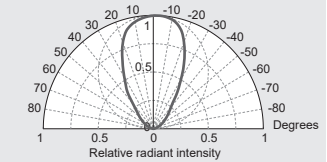
Bar Lights That Use Surface-Mounted LEDs

These are Bar Lights that use surface-mounted LEDs. We provide the narrow type, which performs convergent illumination for a narrow space, and the wide type (-WD) which illuminates a wide space.

Select the directional characteristics of a narrow type or wide type

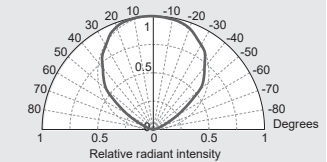
Directional characteristics of the Narrow Type (White)

Zoomed-in view of the emitting surface



Directional characteristics of the Wide Type (White)

Zoomed-in view of the emitting surface

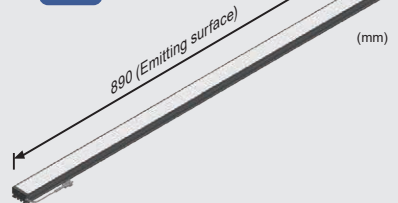


Custom Order Example

E.g.: Different shape



Create a light unit with a long size

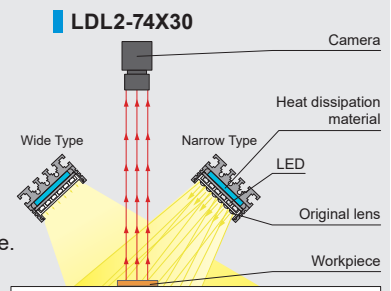


- External/internal diameter
- Wavelength/color
- Increase output
- Cable length
- Illuminating angle
- Format/material
- Connector format
- Installation/mounting

Etc. Contact us for any inquiries.

Example Configuration

Achieved light with a narrow directionality using the original lens located in front of the LEDs. Illuminates direct light from any angle.

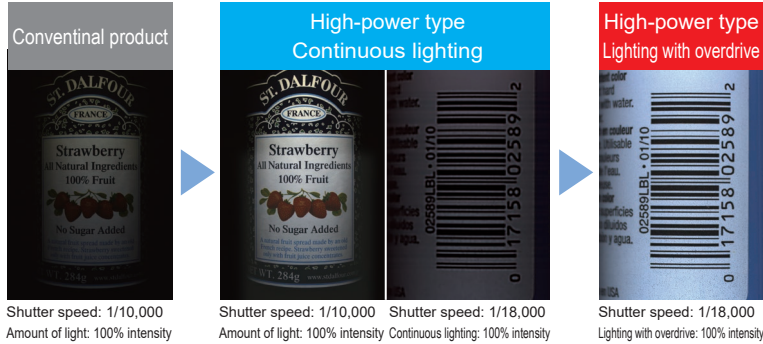
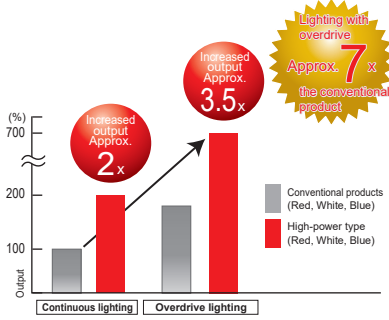


## Increased Brightness and Rich Variety of Sizes

For detailed information on the overdrive, refer to P.393.

The data included is for reference only. Actual values may vary.

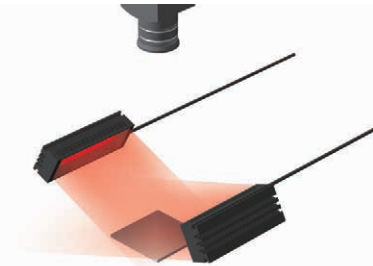
### Brightness comparison



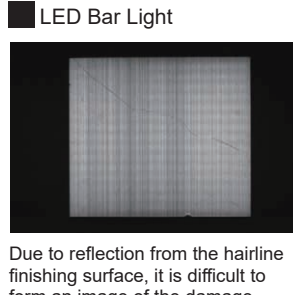
Shutter speed: 1/10,000 Amount of light: 100% intensity  
 Shutter speed: 1/10,000 Amount of light: 100% intensity Continuous lighting: 100% intensity  
 Shutter speed: 1/18,000 Lighting with overdrive: 100% intensity

\*Comparison of LDL2-74X30SW and LDL2-74X30SW2. Comparison of LDL2-74X30SW2 on continuous lighting and overdrive lighting.

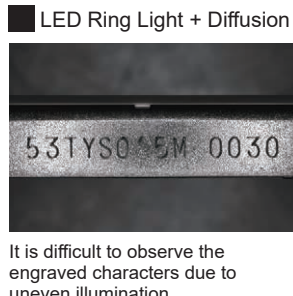
## Imaging Example: Imaging of Damage in Sheet Metals (Hairline Finishing)



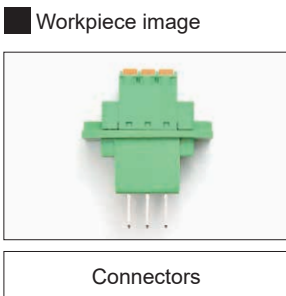
Description	Visual inspection
Workpiece	Aluminum sheets (hairline finishing)
Before the proposal	LED Bar Light
After the proposal	LDL2-74X30RD Precise illumination angle and direction
Result	Extracts only the damage



## Imaging Example: Imaging Engraved Characters on Plastic Surfaces



## Imaging Example: Imaging the Appearance of Connector Pins



LDR2	Ring (Direct)
LDR2-LA	Ring (Direct)
LDR-LA1	Ring (Direct)
SQR	Ring (Direct)
SQR-TP	Ring (Direct)
HLDR3	Ring (Convergent/Diffused)
HPR2	Ring (Convergent/Diffused)
LFR	Ring (Convergent/Diffused)
LKR	Ring (Convergent/Diffused)
FPR	Ring (Convergent/Diffused)
FPQ3	Square
LDL2	Bar
LDLB	Bar
HLDL3	Bar
LB	Bar
TH2 (5 types)	Flat
LFL	Flat
HPD2	Dome
LDM2	Dome
LAV	Dome
PDM	Dome
LFXV	Dome
LFX3	Dome
LFX3-PT	Dome
LFV3	Coaxial
LFV3-G	Coaxial
MSU	Coaxial
MFU	Coaxial
PF	Strobe
HLDR-IP	Water-proof
HSL-PCL	Water-proof
Small COB Lights	COB
UV3/VL3	UV / Violet
UV	UV / Violet
LNSP-UV3-FN	UV / Violet
IR2 (Under 1000-nm Type)	Infrared
IR (Over 1000-nm Type)	Infrared
CIR	Infrared
IU	Intensity Control
HLV3	Spot, Etc.
LV	Spot, Etc.
LSP	Spot, Etc.
HFS/HFR	Spot, Etc.
HLV3-22-4-NR	Spot, Etc.
HLV3-3M-RGB-4	Spot, Etc.
PFBR-600SW2	Spot, Etc.
PFBR-150	Spot, Etc.
PFB3	Spot, Etc.
LNSP2	Line (Convergent)
Coaxial Units	Line (Convergent)
LNSP-FN	Line (Convergent)
LN/LN-HK	Line (Convergent)
LNSD	Line (Diffused)
LND2	Line (Diffused)
LT	Line (Diffused)
LNV	Line (Diffused)
LFXV (Rectangular Type)	Line (Diffused)
TH2 (Rectangular Type)	Line (Diffused)
LNDG	Line (Oblique Angled)
LNIS2	Line (Oblique Angled)
LNIS	Line (Oblique Angled)
LNIS-FN	Line (Oblique Angled)
Telecentric Lens	Lenses
Macro Lens	Lenses

You can inquire using our website.

- Sample Testing
- Light Unit Selection
- Free Product Trial
- Custom Orders
- Product Details
- Pricing/Quotation
- Discontinued Products

Inquire on our website here. <https://www.ccs-grp.com/contact/>

# LDL2 Series

Refer to our website for product details.

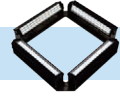


CCS LDL2

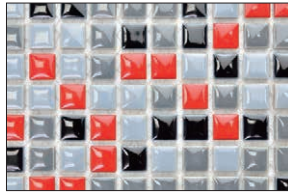
Search



## Imaging Example: Imaging the Surface and Appearance of Tiles

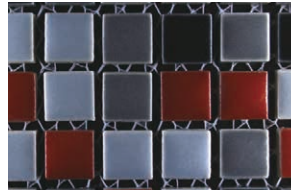


Workpiece image



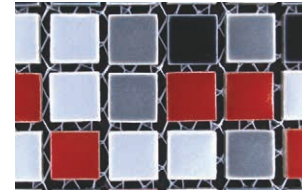
Tiles

LDL2-119X16SW2 (double use)



It is difficult to observe the surface and appearance of the tiles with a double use of the Bar Lights due to uneven illumination.

LDL2-119X16SW2 (quadruple use) + bracket



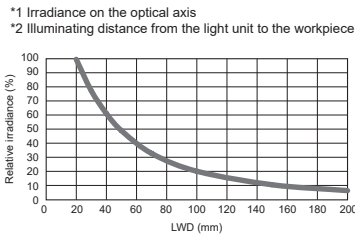
The Bar Lights which are mounted on the four sides of the bracket illuminate the surface and appearance of the tiles, so that they are captured brightly and evenly.

## Data: Relative Irradiance Graph/Uniformity (Representative Example)

The data included is for reference only. Actual values may vary.

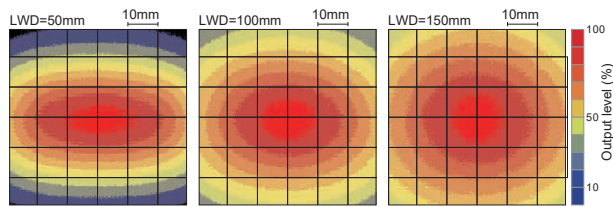
### LDL2-74X30SW (Narrow type)

Relative irradiance graph<sup>\*1</sup>  
(LWD characteristics)<sup>\*2</sup>

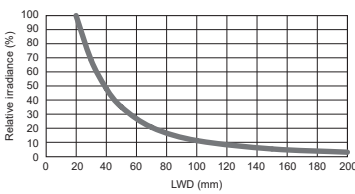


\*1 Irradiance on the optical axis  
\*2 Illuminating distance from the light unit to the workpiece

### Uniformity (Relative irradiance)

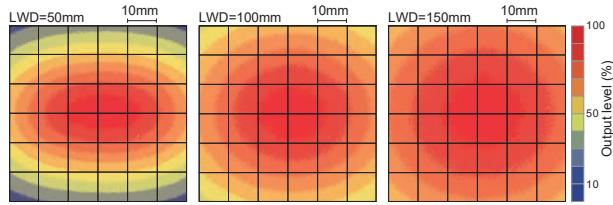


### LDL2-74X30SW-WD (Wide type)



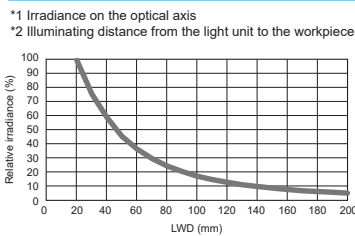
\*1 Irradiance on the optical axis  
\*2 Illuminating distance from the light unit to the workpiece

### Uniformity (Relative irradiance)



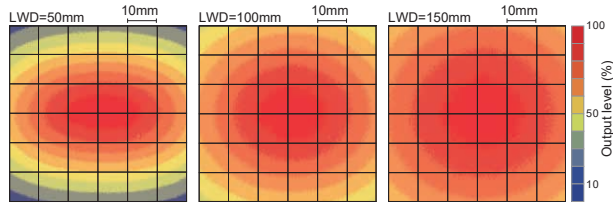
### LDL2-74X30SW2(A) (Narrow type)

Relative irradiance graph<sup>\*1</sup>  
(LWD characteristics)<sup>\*2</sup>

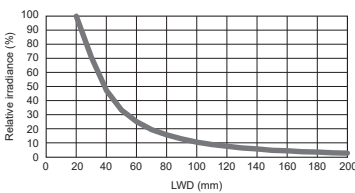


\*1 Irradiance on the optical axis  
\*2 Illuminating distance from the light unit to the workpiece

### Uniformity (Relative irradiance)

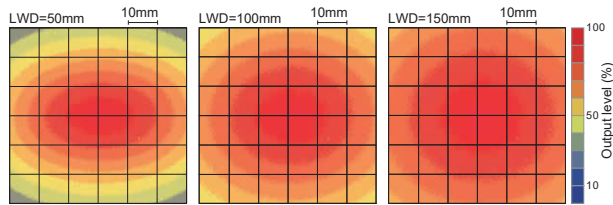


### LDL2-74X30SW2-WD(A) (Wide type)



\*1 Irradiance on the optical axis  
\*2 Illuminating distance from the light unit to the workpiece

### Uniformity (Relative irradiance)

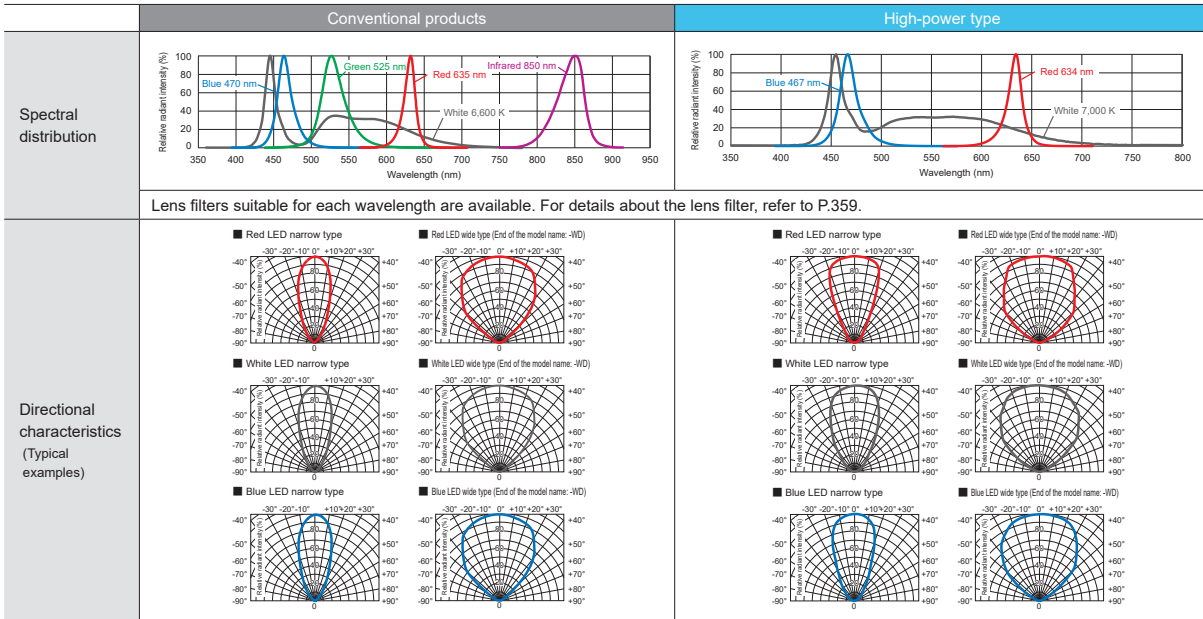


Conventional products

New products

Ring (Direct)	LDR2 LDR2-LA LDR-LA1 SQR SQR-TP
Ring (Convergent/Diffused)	HLDR3 HPR2 LFR LKR FPR
Square	FPQ3
Bar	<b>LDL2</b> LDLB HLDL3 LB
Flat	TH2 (5 types) LFL
Dome	HPD2 LDM2 LAV PDM LFXV LFX3 LFX3-PT
Coaxial/Coaxial	LFV3 LFV3-G
Coaxial	MSU MFU
Strobe	PF
Water-proof	HLDR-IP HSL-PCL
COB	Small COB Lights
UV/Violet	UV3/VL3 UV LNSP-UV3-FN
Infrared	IR2 (Under 1000-nm Type) IR (Over 1000-nm Type) CIR
Intensity Control	IU
Spot, Etc.	HLV3 LV LSP HFS/HFR HLV3-22-4-NR HLV3-3M-RGB-4 PFBR-600SW2 PFBR-150 PFBR3
Line (Convergent)	LNLP LNSP2 Coaxial Units LNSP-FN LN/LN-HK
Line (Diffused)	LNSD LND2 LT LNV LFXV (Rectangular Type) TH2 (Rectangular Type)
Line (Oblique Angled)	LNDG LNIS2 LNIS LNIS-FN
Lenses	Telecentric Lens Macro Lens

## LED Properties



Lens filters suitable for each wavelength are available. For details about the lens filter, refer to P.359.

Be sure to read the User Manual included with the product before use and observe cautionary information. The data included is for reference only. Actual values may vary.

## Differences between conventional products and high-power types

Changes	Conventional product	High-power type
Peak emitting wavelength	Red 635 nm / Blue 470 nm	Red 634 nm / Blue 467 nm
Correlated color	White 6,600 K	White 7,000 K
Power consumption	Refer to the Lineup table. (P.65 to 66)	
Spectral distribution	Refer to the LED properties. (P.64)	
Directional characteristics	Refer to the LED properties. (P.64)	

### Model name

Conventional product	High-power type
(Example) LDL2-41X16SW LDL2-41X16SW-WD LDL2-41X16RD LDL2-41X16RD-WD	(Example) LDL2-41X16SW2(A) LDL2-41X16SW2-WD(A) LDL2-41X16RD2 LDL2-41X16RD2-WD

### Change in model names

"(A)" is added to the end of SW2 model names only  
 e.g. LDL2-41X16SW2 → LDL2-41X16SW2(A)  
 LDL2-41X16SW2-WD → LDL2-41X16SW2-WD(A)

Reason	Impact on functions and performance
LEDs have been changed due to the discontinuation of the LEDs used.	Lower correlated color temperature (more yellow) Conventional product: 7800 K New product: 7000 K

Power consumption differs between the conventional product and the high output type. Make sure that the total power consumption is within the output power of the control unit of the product before use.

Optional items are the same as for the conventional product. For optional items of newly added sizes, refer to the lineup of each item.

### Shortest Bar Light in the Series

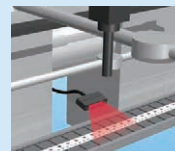
#### LDL2-19X4 Series



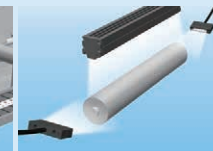
Applications:  
Visual inspection of extremely small parts, etc.



Use it for installations in narrow devices or to save space on your manufacturing line.



Narrow spaces inside devices



As assistance lighting for other lights

You can inquire using our website.

- Sample Testing
- Light Unit Selection
- Free Product Trial
- Custom Orders
- Product Details
- Pricing/Quotation
- Discontinued Products

Inquire on our website here.  
<https://www.ccs-grp.com/contact/>

# LDL2 Series



Refer to our website for product details.

CCS LDL2

Search



## Lineup (Conventional Products) “-WD” at the end of the model name: Wide type

Emitting width	Model Name <sup>1</sup>	Input Voltage	Power Consumption					Option	Extension Cables	Recommended Control Units	Weight
			RD (Red)	SW (White)	BL (Blue)	GR (Green)	IR850 (Infrared)				
8 mm	LDL2-33X8□□ <sup>2</sup>	24 V	1.3 W	0.8 W	0.8 W	0.8 W	1.3 W <sup>3</sup>	Diffusion Plate Polarizing Plate Bracket			20 g
	LDL2-41X16□□(-WD)	24 V	1.9 W	1.9 W	1.9 W	1.9 W	—		PD4 PD3	50 g	
	LDL2-80X16□□(-WD)	24 V	3.8 W	3.8 W	3.8 W	3.8 W	—		CC-ST-1024 POD <sup>3,4</sup>	75 g	
	LDL2-119X16□□(-WD)	24 V	5.7 W	5.7 W	5.7 W	5.7 W	—		*3 Cannot use infrared.	95 g	
	LDL2-158X16□□(-WD)	24 V	7.6 W	7.6 W	7.6 W	7.6 W	—			120 g	
16 mm	LDL2-197X16□□(-WD)	24 V	9.5 W	9.5 W	9.5 W	9.5 W	—			145 g	
	LDL2-236X16□□(-WD)	24 V	12 W	12 W	12 W	12 W	—			170 g	
	LDL2-275X16□□(-WD)	24 V	14 W	14 W	14 W	14 W	—			195 g	
	LDL2-314X16□□(-WD)	24 V	16 W	16 W	16 W	16 W	—			220 g	
	LDL2-353X16□□(-WD)	24 V	18 W	18 W	18 W	18 W	—		FCB <sup>5</sup> Straight Cable	PD4 PD3	245 g
	LDL2-392X16□□(-WD)	24 V	19 W	19 W	19 W	19 W	—			POD <sup>4</sup>	270 g
	LDL2-431X16□□(-WD)	24 V	21 W	21 W	21 W	21 W	—		FCB-W <sup>6</sup> 2-Branch Cable		295 g
	LDL2-470X16□□(-WD)	24 V	23 W	23 W	23 W	23 W	—				320 g
	LDL2-509X16□□(-WD)	24 V	25 W	25 W	25 W	25 W	—		FCB-F 4-Branch Cable		345 g
	LDL2-26X30□□(-WD)	24 V	1.9 W	1.9 W	1.9 W	1.9 W	—				55 g
	LDL2-50X30□□(-WD)	24 V	3.8 W	3.8 W	3.8 W	3.8 W	—				80 g
	LDL2-74X30□□(-WD)	24 V	5.7 W	5.7 W	5.7 W	5.7 W	—			PD4 PD3	100 g
	LDL2-98X30□□(-WD)	24 V	7.6 W	7.6 W	7.6 W	7.6 W	—	Diffusion Plate Polarizing Plate Protective Plate Bracket		CC-ST-1024 POD <sup>4</sup>	125 g
	LDL2-122X30□□(-WD)	24 V	9.5 W	9.5 W	9.5 W	9.5 W	—		*5 The cables with a model name that ends with -ME7/-EL2/-PF/-PF-EL9 are not included.		150 g
	LDL2-146X30□□(-WD)	24 V	12 W	12 W	12 W	12 W	—				170 g
LDL2-170X30□□(-WD)	24 V	14 W	14 W	14 W	14 W	—				200 g	
LDL2-194X30□□(-WD)	24 V	16 W	16 W	16 W	16 W	—				225 g	
LDL2-218X30□□(-WD)	24 V	18 W	18 W	18 W	18 W	—				240 g	
LDL2-242X30□□(-WD)	24 V	19 W	19 W	19 W	19 W	—				275 g	
LDL2-266X30□□(-WD)	24 V	21 W	21 W	21 W	21 W	—				280 g	
LDL2-290X30□□(-WD)	24 V	23 W	23 W	23 W	23 W	—				325 g	
LDL2-314X30□□(-WD)	24 V	25 W	25 W	25 W	25 W	—			PD4 PD3	350 g	
LDL2-338X30□□(-WD)	24 V	27 W	27 W	27 W	27 W	—			POD <sup>4</sup>	375 g	
LDL2-362X30□□(-WD)	24 V	29 W	29 W	29 W	29 W	—				400 g	
LDL2-386X30□□(-WD)	24 V	31 W	31 W	31 W	31 W	—				425 g	
LDL2-410X30□□(-WD)	24 V	33 W	33 W	33 W	33 W	—				450 g	
LDL2-434X30□□(-WD)	24 V	35 W	35 W	35 W	35 W	—				475 g	
LDL2-458X30□□(-WD)	24 V	37 W	37 W	37 W	37 W	—				500 g	
LDL2-482X30□□(-WD)	24 V	38 W	38 W	38 W	38 W	—				525 g	
LDL2-506X30□□(-WD)	24 V	40 W	40 W	40 W	40 W	—				550 g	

Extension Cables ▶ P.371    Control Unit Selection Guide ▶ P.305    List of Control Unit Specifications ▶ P.307

\* For the peak wavelength / correlated color temperature, refer to the spectral distribution on P.64 "LED Properties".  
<sup>1</sup> □ □ in the model name contains the LED color. (RD: Red, SW: White, BL: Blue, GR: Green, IR850: Infrared)  
<sup>2</sup> All LEDs of the LDL2-33X8 have wide type directional characteristics.  
<sup>3</sup> Infrared lighting cannot be used in combination with a strobe control unit (override specification type). Please contact us if you would like to request a custom order.  
<sup>4</sup> For information on the combination of light units and POD Series control unit, please refer to our website. <https://www.ccs-grp.com/lnk/qr/pod>

**Lineup (High-Power Type)** “-WD” at the end of the model name: Wide type

Emitting width	Model Name <sup>*1</sup>	Input Voltage	Power Consumption			Option	Extension Cables	Recommended Control Units	Weight
			RD (Red)	SW <sup>*2</sup> (White)	BL (Blue)				
4 mm	LDL2-19X4□□2 <sup>4</sup>	24 V	1.3 W	1.3 W	1.1 W	Diffusion Plate Polarizing Plate Bracket <sup>*5</sup>		12 g	
	LDL2-33X8□□2 <sup>4</sup>	24 V	2.6 W	2.1 W	1.5 W	Diffusion Plate Polarizing Plate Bracket	PD4 PD3 CC-ST-1024 POD <sup>*5</sup>	20 g	
8 mm	LDL2-41X16□□2(-WD)	24 V	3.8 W	3.8 W	3.8 W			50 g	
	LDL2-80X16□□2(-WD)	24 V	7.6 W	7.6 W	7.6 W			75 g	
	LDL2-119X16□□2(-WD)	24 V	12 W	12 W	12 W			95 g	
	LDL2-158X16□□2(-WD)	24 V	16 W	16 W	16 W			120 g	
	LDL2-197X16□□2(-WD)	24 V	19 W	19 W	19 W	FCB <sup>*6</sup> Straight Cable		145 g	
	LDL2-236X16□□2(-WD)	24 V	23 W	23 W	23 W	FCB-W <sup>*7</sup> 2-Branch Cable		170 g	
	LDL2-275X16□□2(-WD)	24 V	27 W	27 W	27 W			195 g	
	LDL2-314X16□□2(-WD)	24 V	31 W	31 W	31 W	FCB-F 4-Branch Cable	PD4 PD3 POD <sup>*5</sup>	220 g	
	LDL2-353X16□□2(-WD)	24 V	35 W	35 W	35 W			245 g	
	LDL2-392X16□□2(-WD)	24 V	38 W	38 W	38 W	FRCB Robot Cable		270 g	
	LDL2-431X16□□2(-WD)	24 V	42 W	42 W	42 W			295 g	
	LDL2-470X16□□2(-WD)	24 V	46 W	46 W	46 W			320 g	
LDL2-509X16□□2(-WD)	24 V	50 W	50 W	50 W			345 g		
16 mm	LDL2-26X30□□2(-WD)	24 V	3.8 W	3.8 W	3.8 W		PD4 PD3	55 g	
	LDL2-50X30□□2(-WD)	24 V	7.6 W	7.6 W	7.6 W		CC-ST-1024 POD <sup>*5</sup>	80 g	
	LDL2-74X30□□2(-WD)	24 V	12 W	12 W	12 W			100 g	
	LDL2-98X30□□2(-WD)	24 V	16 W	16 W	16 W	Diffusion Plate Polarizing Plate Protective Plate Bracket		125 g	
	LDL2-122X30□□2(-WD)	24 V	19 W	19 W	19 W			150 g	
	LDL2-146X30□□2(-WD)	24 V	23 W	23 W	23 W			170 g	
	LDL2-170X30□□2(-WD)	24 V	27 W	27 W	27 W			200 g	
	LDL2-194X30□□2(-WD)	24 V	31 W	31 W	31 W			225 g	
	LDL2-218X30□□2(-WD)	24 V	35 W	35 W	35 W			240 g	
	LDL2-266X30□□2(-WD)	24 V	42 W	42 W	42 W			280 g	
	LDL2-242X30□□2(-WD)	24 V	38 W	38 W	38 W			275 g	
	LDL2-290X30□□2(-WD)	24 V	46 W	46 W	46 W		PD4 PD3 POD <sup>*5</sup>	325 g	
LDL2-314X30□□2(-WD)	24 V	50 W	50 W	50 W			350 g		
LDL2-338X30□□2(-WD)	24 V	53 W	53 W	53 W			375 g		
LDL2-362X30□□2(-WD)	24 V	57 W	57 W	57 W			400 g		
LDL2-386X30□□2(-WD) <sup>*3</sup>	24 V	61 W	61 W	61 W			425 g		
LDL2-410X30□□2(-WD) <sup>*3</sup>	24 V	65 W	65 W	65 W		FCB-EL2 Straight Cable	450 g		
LDL2-434X30□□2(-WD) <sup>*3</sup>	24 V	69 W	69 W	69 W			475 g		
LDL2-458X30□□2(-WD) <sup>*3</sup>	24 V	72 W	72 W	72 W		FCB-W-EL2 2-Branch Cable	500 g		
LDL2-482X30□□2(-WD) <sup>*3</sup>	24 V	76 W	76 W	76 W			525 g		
LDL2-506X30□□2(-WD) <sup>*3</sup>	24 V	80 W	80 W	80 W		FCB-EL2 Straight Cable	550 g		

Extension Cables ▶ P.371

Control Unit Selection Guide ▶ P.305

List of Control Unit Specifications ▶ P.307

\* For the peak wavelength / correlated color temperature, refer to the spectral distribution on P.64 "LED Properties".

\*1 □□ in the model name contains the LED color. (RD: Red, SW: White, BL: Blue)

\*2 SW: (A) is added to the end of the model name only for white color.

Example: LDL2-41X16SW2(A), LDL2-41X16SW2-WD(A)

\*3 The connector is an EL connector (ELP-02V Ⓢ: + Ⓢ: brown, - blue).

Please use a power supply with EL connectors when using this product.

\*4 All LEDs of the LDL2-19X4 and LDL2-33X8 have wide type directional characteristics.

\*5 For information on the combination of light units and POD Series control unit, please refer to our website. <https://www.ccs-grp.com/lnk/qr/pod>

**Change in model names**

"(A)" is added to the end of SW2 model names only

e.g. LDL2-41X16SW2 → LDL2-41X16SW2(A)

LDL2-41X16SW2-WD → LDL2-41X16SW2-WD(A)

Reason	Impact on functions and performance
LEDs have been changed due to the discontinuation of the LEDs used.	Lower correlated color temperature (more yellow) Conventional product: 7800 K New product: 7000 K

You can inquire using our website.

- Sample Testing
- Light Unit Selection
- Free Product Trial
- Custom Orders
- Product Details
- Pricing/Quotation
- Discontinued Products

Inquire on our website here. <https://www.ccs-grp.com/contact/>

LDR2 LDR2-LA LDR-LA1 SQR SQR-TP	Ring (Direct)
HLDR3 HPR2 LFR LKR FPR	Ring (Convergent/Diffused)
FPQ3	Square
LDL2 LDLB HDL3 LB	Bar
TH2 (5 types) LFL	Flat
HPD2 LDM2 LAV PDM LFXV LFX3	Dome
LFX3-PT	Coaxial
LFV3 LFV3-G	Coaxial
MSU MFU	Coaxial
PF	Strobe
HLDR-IP HSL-PCL	Water-proof
Small COB Lights UV3/VL3 UV LNSP-UV3-FN	COB UV / Violet
IR2 (Under 1000-nm Type) IR (Over 1000-nm Type) CIR	Infrared
IU	Intensity Control
HLV3 LV LSP HFS/HFR HLV3-22-4-NR HLV3-3M-RGB-4 PFBR-600SW2 PFBR-150 PFB3	Spot, Etc.
LNLP LNSP2 Coaxial Units LNSP-FN LN/LN-HK	Line (Convergent)
LNSD LND2 LT LNV LFXV (Rectangular Type) TH2 (Rectangular Type)	Line (Diffused)
LNDG LNSI2 LNSI LNSI-FN	Line (Oblique Angled)
Telecentric Lens Macro Lens	Lenses

# LDL2 Series

Refer to our website for product details.

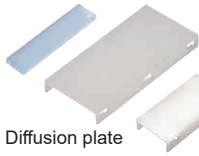


CCS LDL2

Search



## Option

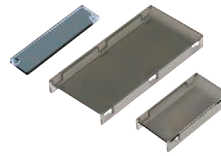


Can prevent glare, which is a problem when making images of glossy workpieces.

### Diffusion plate

Model name	Applicable Light Unit (Conventional product / High-power type) (Common for all colors)
DF-LDL2-19X4	LDL2-19X4
DF-LDL2-33X8	LDL2-33X8
DF-LDL2-41X16	LDL2-41X16(-WD)
DF-LDL2-80X16	LDL2-80X16(-WD)
DF-LDL2-119X16	LDL2-119X16(-WD)
DF-LDL2-158X16	LDL2-158X16(-WD)
DF-LDL2-26X30	LDL2-26X30(-WD)
DF-LDL2-50X30	LDL2-50X30(-WD)
DF-LDL2-74X30	LDL2-74X30(-WD)
DF-LDL2-98X30	LDL2-98X30(-WD)
DF-LDL2-122X30	LDL2-122X30(-WD)
DF-LDL2-146X30	LDL2-146X30(-WD)
DF-LDL2-218X30	LDL2-218X30(-WD)
DF-LDL2-266X30	LDL2-266X30(-WD)

▶ P.363



Use with a polarizing filter to remove the light's surface reflection.

### Polarizing plate

Model name	Applicable Light Unit (Conventional product / High-power type) (Common for all colors)
PL-LDL2-19X4-HO	LDL2-19X4
PL-LDL2-19X4-VE	
PL-LDL2-33X8-HO	LDL2-33X8
PL-LDL2-33X8-VE	
PL-LDL2-41X16	LDL2-41X16(-WD)
PL-LDL2-41X16-VE	
PL-LDL2-80X16	LDL2-80X16(-WD)
PL-LDL2-80X16-VE	
PL-LDL2-119X16	LDL2-119X16(-WD)
PL-LDL2-119X16-VE	
PL-LDL2-158X16	LDL2-158X16(-WD)
PL-LDL2-158X16-VE	

▶ P.365

There are two kinds of polarizing plates: the HO and the VE. For details, refer to P. 365.

Model name	Applicable Light Unit (Conventional product / High-power type) (Common for all colors)
PL-LDL2-26X30	LDL2-26X30(-WD)
PL-LDL2-26X30-VE	
PL-LDL2-50X30	LDL2-50X30(-WD)
PL-LDL2-50X30-VE	
PL-LDL2-74X30	LDL2-74X30(-WD)
PL-LDL2-74X30-VE	
PL-LDL2-98X30	LDL2-98X30(-WD)
PL-LDL2-98X30-VE	
PL-LDL2-122X30	LDL2-122X30(-WD)
PL-LDL2-122X30-VE	
PL-LDL2-146X30	LDL2-146X30(-WD)
PL-LDL2-146X30-VE	
PL-LDL2-218X30	LDL2-218X30(-WD)
PL-LDL2-218X30-VE	
PL-LDL2-266X30	LDL2-266X30(-WD)
PL-LDL2-266X30-VE	



Protects the emitting part of the light unit.

Not intended to protect against dust or water.

### Protective plate

Model name	Applicable Light Unit (Conventional product / High-power type) (Common for all colors)
CV-LDL2-41X16	LDL2-41X16(-WD)
CV-LDL2-80X16	LDL2-80X16(-WD)
CV-LDL2-119X16	LDL2-119X16(-WD)
CV-LDL2-158X16	LDL2-158X16(-WD)
CV-LDL2-26X30	LDL2-26X30(-WD)
CV-LDL2-50X30	LDL2-50X30(-WD)
CV-LDL2-74X30	LDL2-74X30(-WD)
CV-LDL2-98X30	LDL2-98X30(-WD)
CV-LDL2-122X30	LDL2-122X30(-WD)
CV-LDL2-146X30	LDL2-146X30(-WD)
CV-LDL2-218X30	LDL2-218X30(-WD)
CV-LDL2-266X30	LDL2-266X30(-WD)

Not applicable for the LDL2-19X4 and LDL2-33X8 Series.

▶ P.368



You can freely adjust the illuminating angle when affixing the Bar Light. Various kinds of illumination are possible depending on the affixing method, such as illumination from two or four directions.

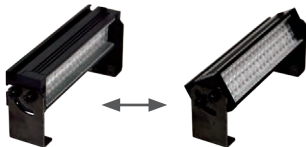
### Bracket

Model name	Note (Conventional product / High-power type)
BK-LDL2	Angle adjustment bracket common for the LDL2 Series (x2)

Not applicable for the LDL2-19X4 and LDL2-33X8 Series.

▶ P.369

Usage example of the BK-LDL2



Adjustable illuminating angle between 0 to 90°



You can freely adjust the illuminating angle when affixing the Bar Light. Various kinds of illumination are possible depending on the affixing method, such as illumination from two or four directions.

### Bracket

Model name	Note (Conventional product / High-power type)
BK-LDQ2-33X8	Bracket that can install four of the Bar Lights.

▶ P.369

We accept custom orders for the brackets that are applicable for the following products. Contact your CCS sales representative for details.

Applicable Light Unit (High-power type)	BK-LDQ2
LDL2-19X4	Bracket that can install four Bar Lights. (Custom orders)
LDL2-26X30	
LDL2-50X30	



You can freely adjust the illuminating angle when affixing the Bar Light. Various kinds of illumination are possible depending on the affixing method, such as illumination from two or four directions.

### Bracket

Model name	Note (Conventional product / High-power type)
BK-LDQ2-41X16	Bracket that can install four of the Bar Lights.
BK-LDQ2-80X16	
BK-LDQ2-119X16	
BK-LDQ2-158X16	
BK-LDQ2-74X30	
BK-LDQ2-98X30	
BK-LDQ2-122X30	
BK-LDQ2-146X30	
BK-LDQ2-218X30	
BK-LDQ2-266X30	

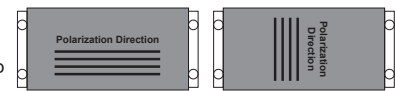
▶ P.369

### When the model number ends with or without HO

As shown in the figure, the polarization direction is **horizontal** with respect to the long side of the polarizing plate.

With or without HO

For VE



### When the model number ends with VE

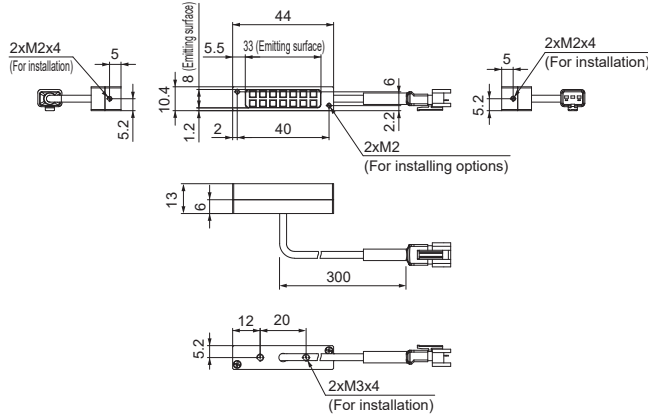
As shown in the figure, the polarization direction is **perpendicular** with respect to the long side of the polarizing plate.

Refer to the Technical Guide Page for polarization. ▶ P.401

➤ Dimensions (mm)

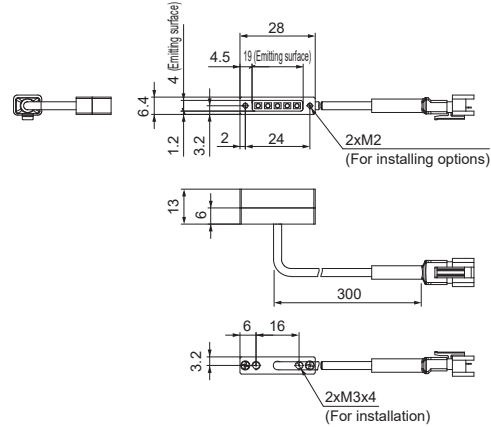
**LDL2-33X8**

Standard products (Conventional products / High-power type) (Common for all colors)



**LDL2-19X4**

Standard products (High-power type) (Common for all colors)

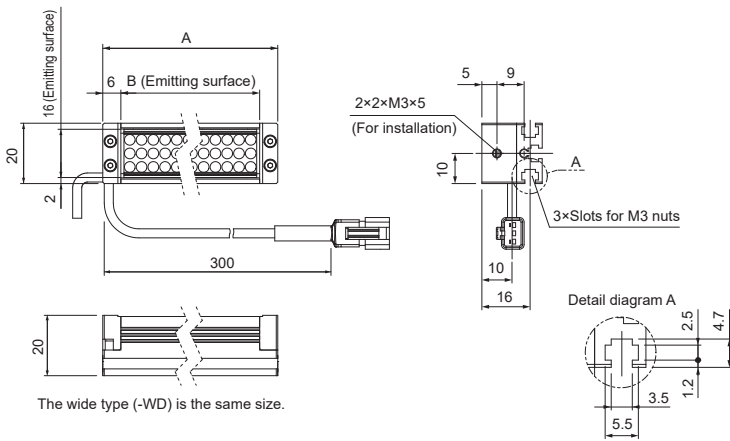


**LDL2-nnnX16**

Standard products (Conventional products / High-power type) Special orders (Conventional products / High-power type)

nnn = B (Emitting surface)

(Common for all colors)



The wide type (-WD) is the same size.

Standard products (Conventional products / High-power type)

Applicable Light Unit	A	B
LDL2-41X16(-WD)	53	41
LDL2-80X16(-WD)	92	80
LDL2-119X16(-WD)	131	119
LDL2-158X16(-WD)	170	158

Special orders (Conventional products / High-power type)

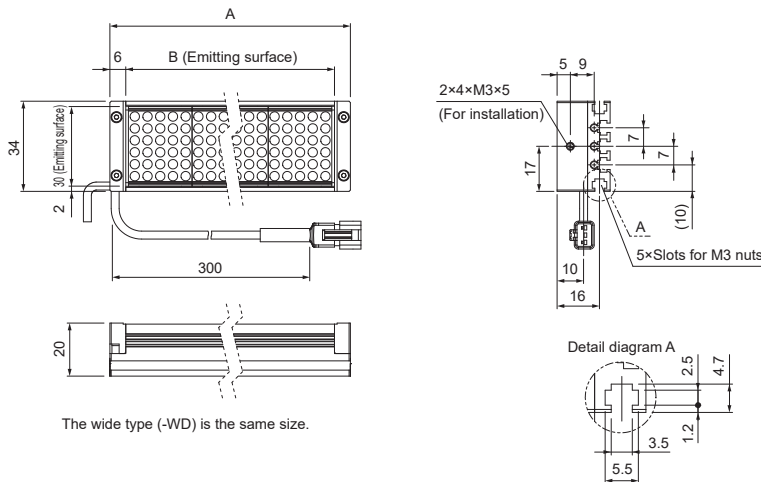
Applicable Light Unit	A	B
LDL2-197X16(-WD)	209	197
LDL2-236X16(-WD)	248	236
LDL2-275X16(-WD)	287	275
LDL2-314X16(-WD)	326	314
LDL2-353X16(-WD)	365	353
LDL2-392X16(-WD)	404	392
LDL2-431X16(-WD)	443	431
LDL2-470X16(-WD)	482	470
LDL2-509X16(-WD)	521	509

**LDL2-nnnX30**

Standard products (Conventional products / High-power type) Special orders (Conventional products / High-power type)

nnn = B (Emitting surface)

(Common for all colors)



The wide type (-WD) is the same size.

Standard products (Conventional products / High-power type)

Applicable Light Unit	A	B
LDL2-26X30(-WD)	38	26
LDL2-50X30(-WD)	62	50
LDL2-74X30(-WD)	86	74
LDL2-98X30(-WD)	110	98
LDL2-122X30(-WD)	134	122
LDL2-146X30(-WD)	158	146
LDL2-218X30(-WD)	230	218
LDL2-266X30(-WD)	278	266

Special orders (Conventional products / High-power type)

Applicable Light Unit	A	B
LDL2-170X30(-WD)	182	170
LDL2-194X30(-WD)	206	194
LDL2-242X30(-WD)	254	242
LDL2-290X30(-WD)	302	290
LDL2-314X30(-WD)	326	314
LDL2-338X30(-WD)	350	338
LDL2-362X30(-WD)	374	362
LDL2-386X30(-WD) <sup>*1</sup>	398	386
LDL2-410X30(-WD) <sup>*1</sup>	422	410
LDL2-434X30(-WD) <sup>*1</sup>	446	434
LDL2-458X30(-WD) <sup>*1</sup>	470	458
LDL2-482X30(-WD) <sup>*1</sup>	494	482
LDL2-506X30(-WD) <sup>*1</sup>	518	506

<sup>\*1</sup> For the conventional products: SM connector (SMR-03V-B, 1: +Brown, 2: NC, 3: -Blue)  
For the high-power type: EL connector (ELP-02V, 1: +Brown, 2: -Blue).  
Use the control unit which has EL connectors.

You can inquire using our website.

- Sample Testing
- Light Unit Selection
- Free Product Trial
- Custom Orders
- Product Details
- Pricing/Quotation
- Discontinued Products

Inquire on our website here.  
<https://www.ccs-grp.com/contact/>